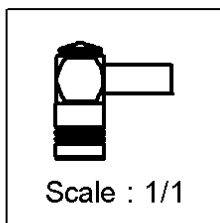
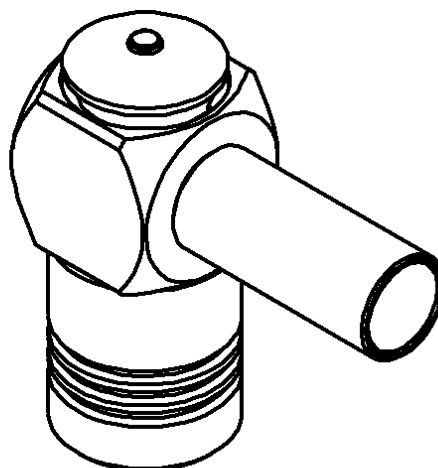
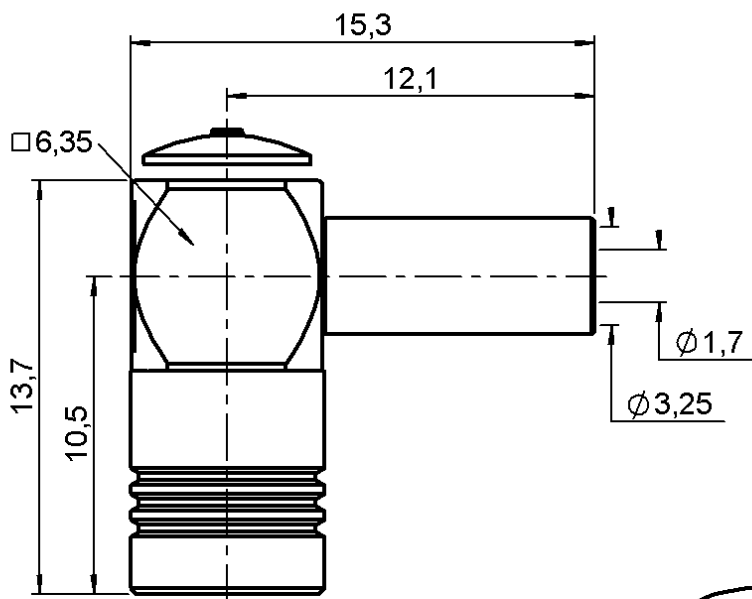


**RIGHT ANGLE PLUG CRIMP TYPE**

**R114.186.720**

**CABLE 2.6/50+75 S - PACK. 100**

Series : SMB



All dimensions are in mm.

COMPONENTS	MATERIALS	PLATING
<b>BODY</b>	<b>BRASS</b>	<b>NICKEL 2 µm</b>
<b>CENTRE CONTACT</b>	<b>BERYLLIUM COPPER</b>	<b>GOLD 0.8 OVER NICKEL 2 µm</b>
<b>OUTER CONTACT</b>	<b>BRONZE</b>	<b>NICKEL 2 µm</b>
<b>INSULATOR</b>	<b>PTFE</b>	
<b>GASKET</b>	-	
<b>OTHERS PARTS</b>	<b>ZAMAK</b>	<b>NICKEL 2 µm</b>
-	-	-
-	-	-



Edition : 9851 A

Design changes may be in order to improve the product.

**RIGHT ANGLE PLUG CRIMP TYPE**

**R114.186.720**

**CABLE 2.6/50+75 S - PACK. 100**

Series : **SMB**

**ELECTRICAL CHARACTERISTICS**

Impedance **50** Ω  
 Frequency **0-4** GHz  
 VSWR **1.35 + 0.040** x F(GHz) Maxi  
 Insertion loss **0.5** √F(GHz) dB  
 RF leakage - ( **57** - F(GHz)) dB mini  
 Operating temperature **-65/+165** °C  
 Voltage rating **335** Veff Maxi  
 Dielectric withstanding **1000** Veff mini  
 Insulation resistance **1000** MΩ mini

**SPECIFICATION**

**28C84522R01 - 00**

Stripping	a	b	c	d	e	f
mm	1.50	5.40	9.60	0.00	8.10	0.00

Assembly instruction : **Crimp 05**

Recommended cables

RG 316  
 KX 22A  
 RG 188  
 RG 179  
 RG 187

Cable retention

- pull off **110** N mini  
 - torque **NA** N.cm

**MECHANICAL CHARACTERISTICS**

Centre contact retention  
 Axial force – Mating end **10** N mini  
 Axial force – Opposite end **10** N mini  
 Torque **NA** N.cm mini

**TOOLING**

Part Number	Description	Hexagon
.	.	.
R282.211.000	CRIMPING TOOL	3.25
R282.235.003	CRIMPING DIES	3.25
R282.293.000	CRIMPING TOOL	-

Recommended torque  
 Mating **NA** N.cm  
 Panel nut **NA** N.cm  
 Clamp nut **NA** N.cm  
 A/F clamp nut **0.000** mm

Mating life **500** Cycles mini  
 Weight **0.000** g

**OTHERS CHARACTERISTICS**

-

**ENVIRONMENTAL**

Hermetic seal **NA** Atm.cm3/s  
 Leakage – pressurised only **NA** Mpa



Edition : 9851 A

Design changes may be in order to improve the product.